

HANSEN

MULTIPLE SOLUTIONS TO FIT YOUR APPLICATION



EZ-SRV

Cartridge Relief Valve

HANSEN

EZ-SRV™ CARTRIDGE RELIEF VALVE

Hansen EZ-SRV™ Cartridge Pressure-Relief Valves protect refrigeration pressure vessels and other refrigeration system components from excessive pressure. If an abnormally high pressure occurs, the cartridge pressure-relief valve will open to relieve the excess pressure, preventing potential damage to equipment and injury to personnel.

EZ-SRV™ valves are built in strict conformance with both ASME Boiler and Pressure Vessel Code requirements and ISO 4126 – Safety Devices for Protection of Excessive Pressure. Each valve bears the ASME code symbol of certification (UV) and CE mark. Valve capacities are rated by the National Board of Boiler and Pressure Vessel Inspectors (NB).

Refrigeration pressure-relief valves are recommended for replacement at least every five years. However, if a relief valve has discharged, it must be replaced as soon as possible. Valve replacement with the Hansen EZ-SRV™ is fast and easy – saving significant time and expense compared to traditional relief valves. The revolutionary design allows for quick, easy replacement of the cartridge with no need to disconnect from the relief piping.

The Hansen EZ-Fitting is available with welded or threaded end connections, a ¼" NPT connection, and built-in gauge port to facilitate safer and controlled servicing. An optional Hansen Gauge Valve can be installed with a tell-tale pressure gauge to indicate overpressure of a valve and whether pressure is present when servicing or troubleshooting the system. The gauge valve can also be used to safely bleed-off residual pressure between a three-way manifold valve and the EZ-SRV™ valve.



*EZ-SRV™
Replacement
Cartridge*



EZ-Fitting

EZ-SRV

REVOLUTIONARY CARTRIDGE DESIGN

APPLICATIONS

Hansen EZ-SRV™ cartridge pressure-relief valves are typically installed on pressure vessels to protect from overpressure and comply with the requirements of ANSI/ASHRAE Standard 15 Safety Standard for Refrigeration Systems, and ANSI/IIAR 2 Equipment, Design, and Installation of Closed-Circuit Ammonia Mechanical Refrigerating Systems, as well as European Pressure Equipment Directive (PED) requirements. Once installed, a properly selected Hansen EZ-SRV™ cartridge pressure-relief valve will vent to atmosphere excessive overpressure and quickly reseal to minimize loss of refrigerant. Optional Hansen Rupture Disc Assemblies (RDAs) help indicate when a pressure-relief valve has discharged. Rupture discs remain open after bursting and if installed with a pressure gauge or switch (required by code), will provide a visual or electronic indication of the occurrence. Hansen EZ-SRV™ valves must be installed in the vapor space above the liquid level of any vessel or component which contains liquid and vapor.

For liquid relief applications, Hansen offers the EZLQ pressure-relief valve, rated U.S. GPM. Typical applications include ASME vessels, oil coolers and other components that can be isolated by control valves or manual shut-off valves.

QUICK, EASY REPLACEMENT

EZ-SRV™ valves have the same reduced capacities as Hansen H5600 series relief valves. The Hansen EZ-Adapter allows for quick, easy replacement of existing Hansen relief valves. The EZ-Adapter provides the same centerline dimensions as the H5600 series relief valve installed with a 2" long nipple, thereby minimizing piping changes to discharge line connections.

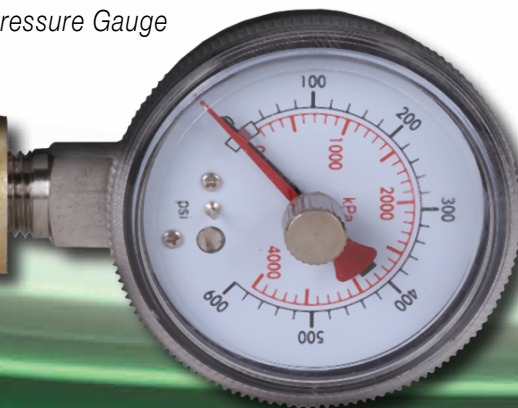
KEY FEATURES – EZ-SRV™ VALVE

- **Revolutionary cartridge design allows for quick and easy replacement—no need to disconnect from piping**
- **Significant time and cost savings compared to replacement of traditional relief valves**
- **Capacities match existing Hansen H5600 "R" series relief valves**
- **Low blowdown (15% or less) for gas service minimizes refrigerant loss**
- **EZ-Fitting is a permanent fixture, available with welded or threaded end connections**
- **MPT inlet eliminates need for nipple**
- **EZ-Adapter component for simple retrofit to existing Hansen relief valves**
- **EZLQ Liquid Rated Relief Valves available**

EZ-Adapter



Optional H7771 Gauge Valve with HG27 Pressure Gauge



Optional Rupture Disc



ORDERING INFORMATION – EZ-SRV™ REFRIGERANT GAS SERVICE RELIEF VALVES

CATALOG NUMBER (EZ-SRV + EZ-FITTING)		CONNECTION SIZE		EQUIVALENT H5600 SERIES VALVE	REPLACEMENT CARTRIDGE VALVE ONLY
THREADED (MPT)	WELDED (BW)	BOTTOM INLET	SIDE OUTLET		
EZB-BT1	EZB-BW1	1/2" (15 mm)	3/4" (20 mm)	H5600R	EZB
EZB-BT2	EZB-BW2	3/4" (20 mm)	1" (25 mm)	H5602R	
EZC-BT2	EZC-BW2	3/4" (20 mm)	1" (25 mm)	H5632R	EZC
EZE-BT4	EZE-BW4	1" (25 mm)	1-1/4" (32 mm)	H5633R	EZE
EZF-BT5	EZF-BW5	1-1/4" (32 mm)	1-1/2" (40 mm)	H5634R	EZF

Standard pressure settings are: 150*, 175, 200, 225, 250*, 275, 300*, 325, 350, 400, 450, 500, 550, and 600 psig. (*Stock pressure settings.) Custom pressure settings (including bar and kPa) and ODS connections are available; contact factory. May require additional delivery time.

To Order: Specify catalog number, pressure setting, optional H7771 Gauge Valve and HG27 Pressure Gauge, EZ-Adapter if needed, and accessories. 1/2" EZ-Adapter, p/n 40-0331; 3/4" EZ-Adapter, p/n 40-0332. For halocarbon applications, a rupture disc assembly is required. Refer to Hansen Bulletin K209.

To Order Dual Kits: Add "D" suffix for Dual Kit to EZ-SRV™ pressure-relief valve catalog number. Specify inlet/outlet connection size and pressure setting.

Example: Dual Kit: EZB/250-BT1, set at 250 psig

ORDERING INFORMATION – EZ-SRV™ REFRIGERANT LIQUID RELIEF VALVES

CATALOG NUMBER (EZ-SRV + EZ-FITTING)		CONNECTION SIZE		CAPACITY GPM – WATER	REPLACEMENT CARTRIDGE VALVE ONLY
THREADED (MPT)	WELDED (BW)	BOTTOM INLET	SIDE OUTLET		
EZLQ-BT1	EZLQ-BW1	1/2" (15 mm)	3/4" (20 mm)	13 GPM@50 psid 16 GPM@75 psid 18 GPM@100 psid	EZLQ
EZLQ-BT2	EZLQ-BW2	3/4" (20 mm)	1" (25 mm)		

Custom pressure settings and ODS connections are available; contact factory.

To Order: Specify catalog number and pressure setting: 50, 75, or 100 psid.

THREE-WAY DUAL SHUT-OFF VALVES	
CATALOG NUMBER	CONNECTION SIZE*
H8021	1/2" FPT
H8022	3/4" FPT
H8024	1" FPT
H8025	1-1/4" FPT

To Order: Specify catalog number and connection size. Three-way valve SWP is 600 psig (41 bar).

*Socket Weld Connections available (add 'S' suffix)
Butt Weld Connections available (add 'W' suffix).



EZ-SRV™ shown with Optional Rupture Discs, Gauge Valves and Pressure Gauges on Three-Way Shut-off Valve

RUPTURE DISC ASSEMBLIES		
CAT NO	CONNECTION SIZE (MPT X MPT)	PRESSURE SETTING PSIG
RDA1	1/2" x 1/2"	150, 250, 300, 400
RDA2	3/4" x 3/4"	150, 250, 300
RDA4	1" x 1"	150, 250, 300
RDA5	1-1/4" x 1-1/4"	150, 250, 300

RUPTURE DISC ACCESSORIES	
HPS	Pressure Switch, 1/8" NPT
HG25	Pressure Gauge, 1/8" NPT
40-0333	1/2" Plated Coupling
40-0334	3/4" Plated Coupling

To Order: Specify catalog number, pressure setting, and Pressure Gauge (HG25) or Switch (HPS). Use a rupture disc assembly with the same or lower pressure setting as the pressure-relief valve. Rupture discs require use with plated coupling.

HANSEN Industrial Refrigeration Valves and Components

Hansen Technologies Corporation
400 Quadrangle Drive, Suite F
Bolingbrook, Illinois 60440 USA
Tel: 630.325.1565 Fax: 630.325.1572 Toll: 800.426.7368
Email: sales@hantech.com Web: www.hantech.com
USA · Asia · Europe · India · Latin America · Middle East
© 2013 Hansen Technologies Corporation

To order, call 866.4HANSEN. For more information, visit us online at www.hantech.com.

EZSRV 09/13